



NTSC U/C

PlayStation



SLUS-01519

Sol Divides



XS Games

WARNING: READ BEFORE USING YOUR PLAYSTATION® GAME CONSOLE.

A very small percentage of individuals may experience epileptic seizures when exposed to certain light patterns or flashing lights. Exposure to certain patterns or backgrounds on a television screen or while playing video games, including games played on the PlayStation® game console, may induce an epileptic seizure in these individuals. Certain conditions may induce previously undetected epileptic symptoms even in persons who have no history of prior seizures or epilepsy. If you, or anyone in your family, has an epileptic condition, consult your physician prior to playing. If you experience any of the following while playing a video game – dizziness, altered vision, eye or muscle twitches, loss of awareness, disorientation, any involuntary movement, or convulsions – IMMEDIATELY discontinue use and consult your physician before resuming play.

WARNING TO OWNERS OF PROJECTION TELEVISIONS:

Do not connect your PlayStation® game console to a projection TV without first consulting the user manual for your projection TV, unless it is of the LCD type. Otherwise, it may permanently damage your TV screen.

USE OF UNOFFICIAL PRODUCT:

The use of unofficial products and peripherals may damage your PlayStation® game console and invalidate your console warranty.

HANDLING YOUR PLAYSTATION DISC:

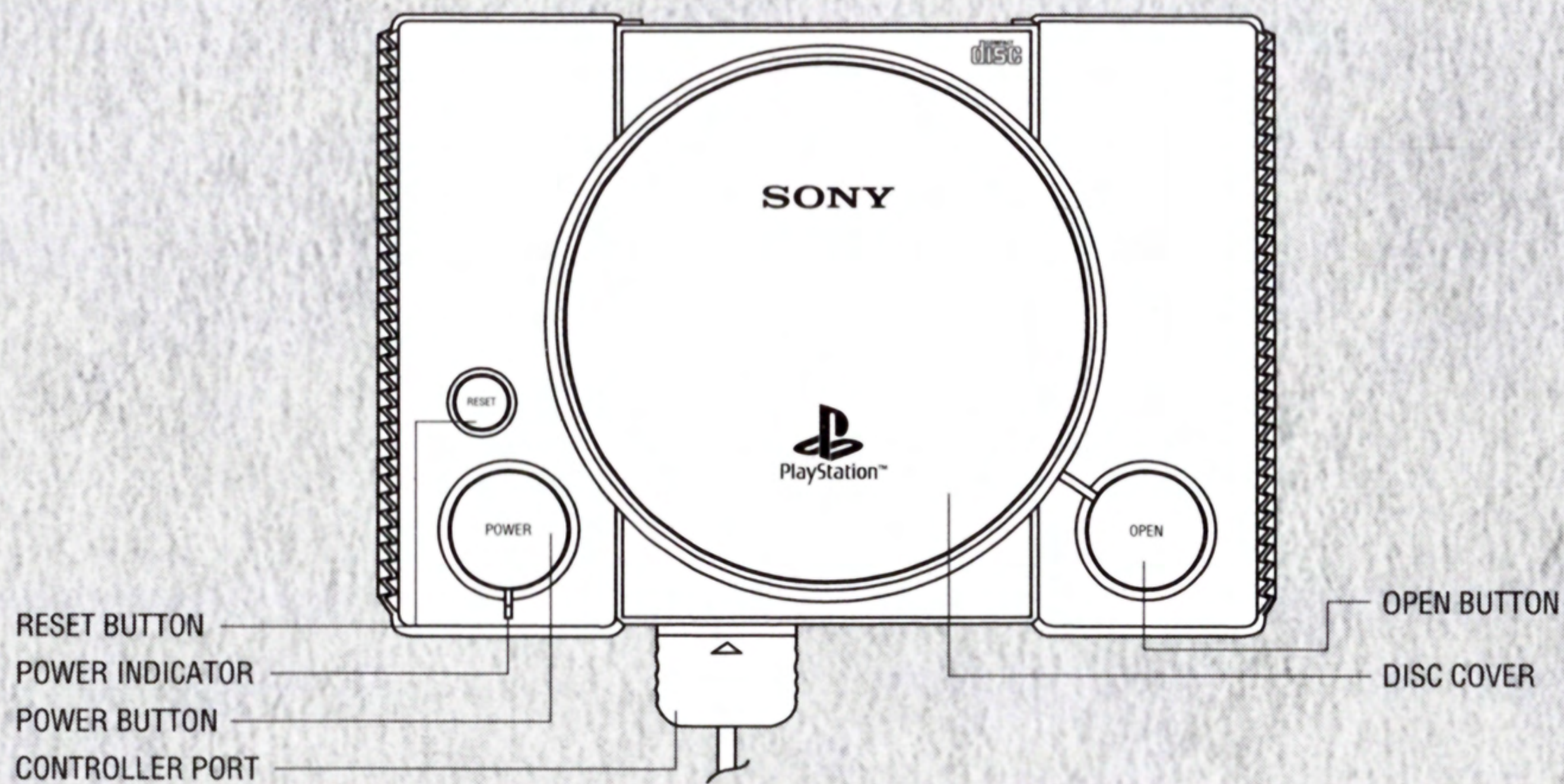
- This compact disc is intended for use only with the PlayStation® game console.
- Do not bend it, crush it, or submerge it in liquids.
- Do not leave it in direct sunlight or near a heater or other source of heat.
- Be sure to take an occasional rest break during extended play.
- Keep this compact disc clean. Always hold the disc by the edges and keep it in its protective case when not in use.
- Clean the disc with a lint-free, soft, dry cloth, wiping in straight lines from center to outer edge. Never use solvents or abrasive cleaners.

Table Of Contents

Soul Eater

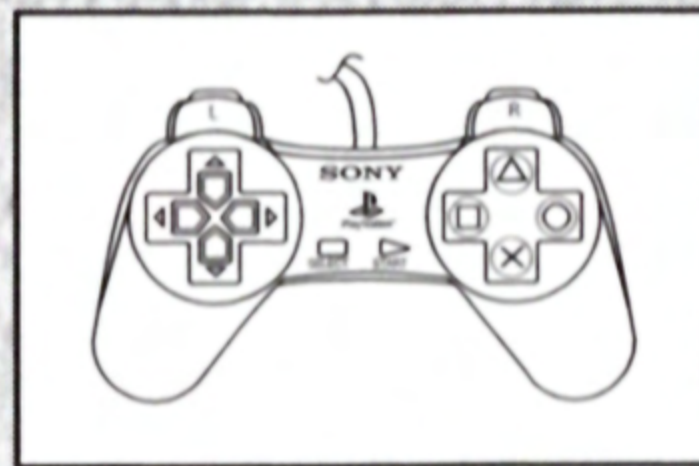
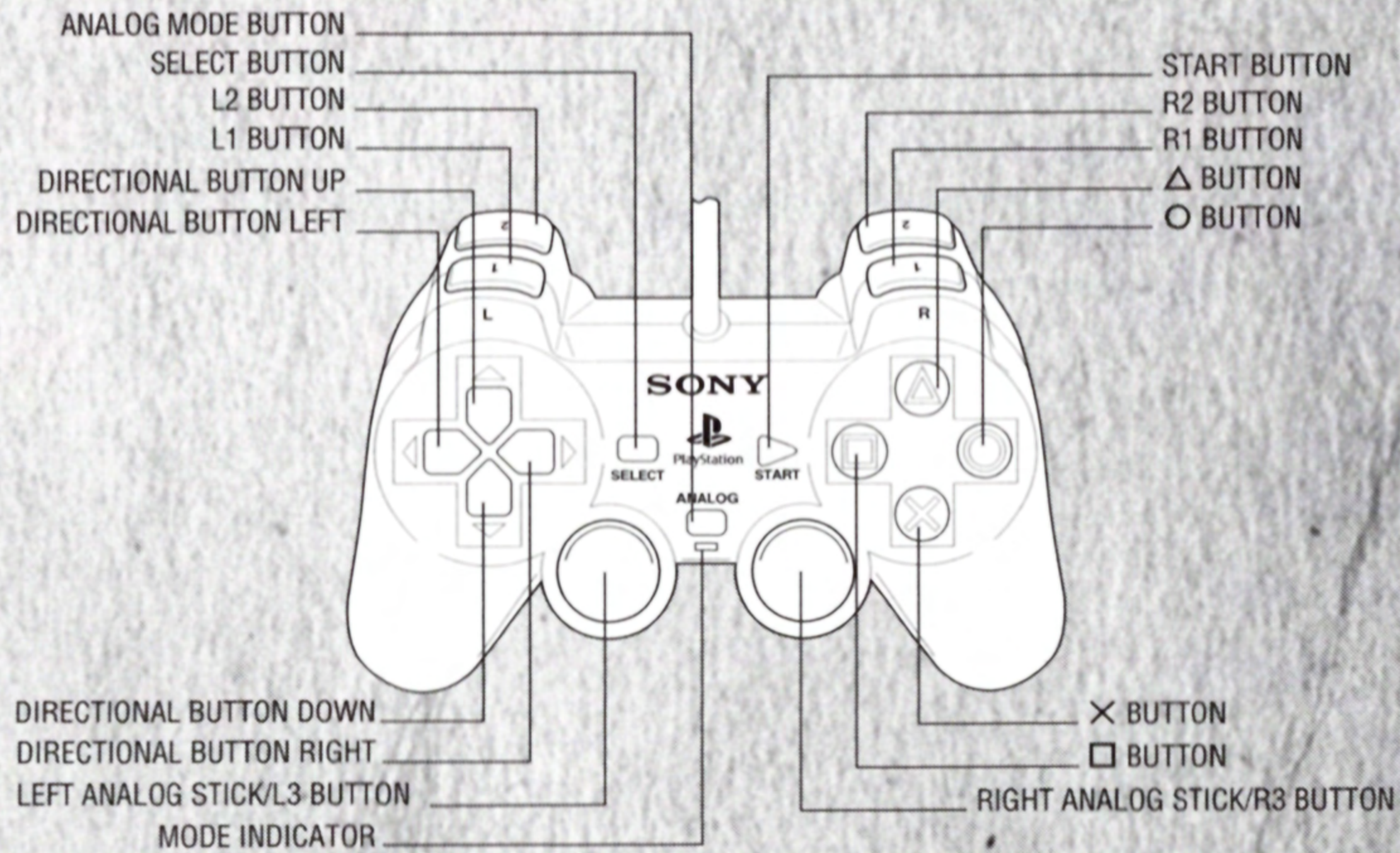
Starting the Game	02
DUALSHOCK® analog controller	03
Story	06
Characters	07
How to start the game: Main Menu	11
Arcade	11
Original Mode	15
Warranty	21

STARTING THE GAME



- Set up your PlayStation® game console according to the instructions in its Instruction Manual. Make sure the power is OFF before inserting or removing a disc. It is advised that you do not insert or remove peripherals or memory cards once the power is turned on.
- Insert the SOL DIVIDE™ disc and close the Disc Cover.
- Insert game controllers and turn on the PlayStation® game console.

DUALSHOCK® analog controller




NOTE: Compatible only in Digital mode.

NOTE: You may have a controller that looks like this, if so please follow the digital instructions outlined above.

	During Game Play	Menu Screen
Directional Key	Character Movement	
○ Button	Magic Attack	
⊗ Button	Magic Select	Accept
△ Button	Fire	Cancel
□ Button	Sword Attack	
L1 Button	Magic Select (left)	
L2 Button	Not Used	
R1 Button	Magic Select (Right)	
R2 Button	Rapid fire	
START Button	Pause, Release pause (Arcade Mode) Menu Window (Original Mode)	
SELECT Button	Not Used	



Magic Attacks can be used by pressing the  button.

The 4 step sword attack

Kashan	Cut	Cut	Cut	→	Cut
Vorg	Cut	Cut	Cut	↑	Cut
Tyora	Cut	Cut	Cut	↓	Cut

Next, it's one chop, but the damage is big.

Slashing Up and Down

Cut Up	↗ + Cut (Hold a long time)
Cut Down	↘ + Cut (Hold a long time)



Tyora



Vorg



Kashan

STORY

A man named Vorg knew it was time for revenge when he heard rumors that the Evil Army was looking for the Spirit Stone. One of the spirit stones was from his home town, Milutia, and was taken by King Silvana.

Once a great warrior of the Westside province of Milutia, Vorg was escorting the ambassador of goodwill from the Forest City Nerafiti when the army of Datilos attacked the city of Milutia. As soon as Vorg heard the grave news he went back to Milutia, but what he saw was a horrid sight of destruction by ruthless people.

After 7 years, a great shadow lurks behind the Castle Silvana. That shadow belongs to the evil King Eftar.

Vorg will now go to battle with his Sword Helos to stop the evil Eftar, who has the Sword Sol Divide.



Characters

You can select between these 3 characters:

Vorg the Dark Warrior

Age 32

Once a great warrior of Milutia. 7 years ago, his homeland was destroyed by the evil King Eftar. Vorg has trained and received a special sword "Helos".

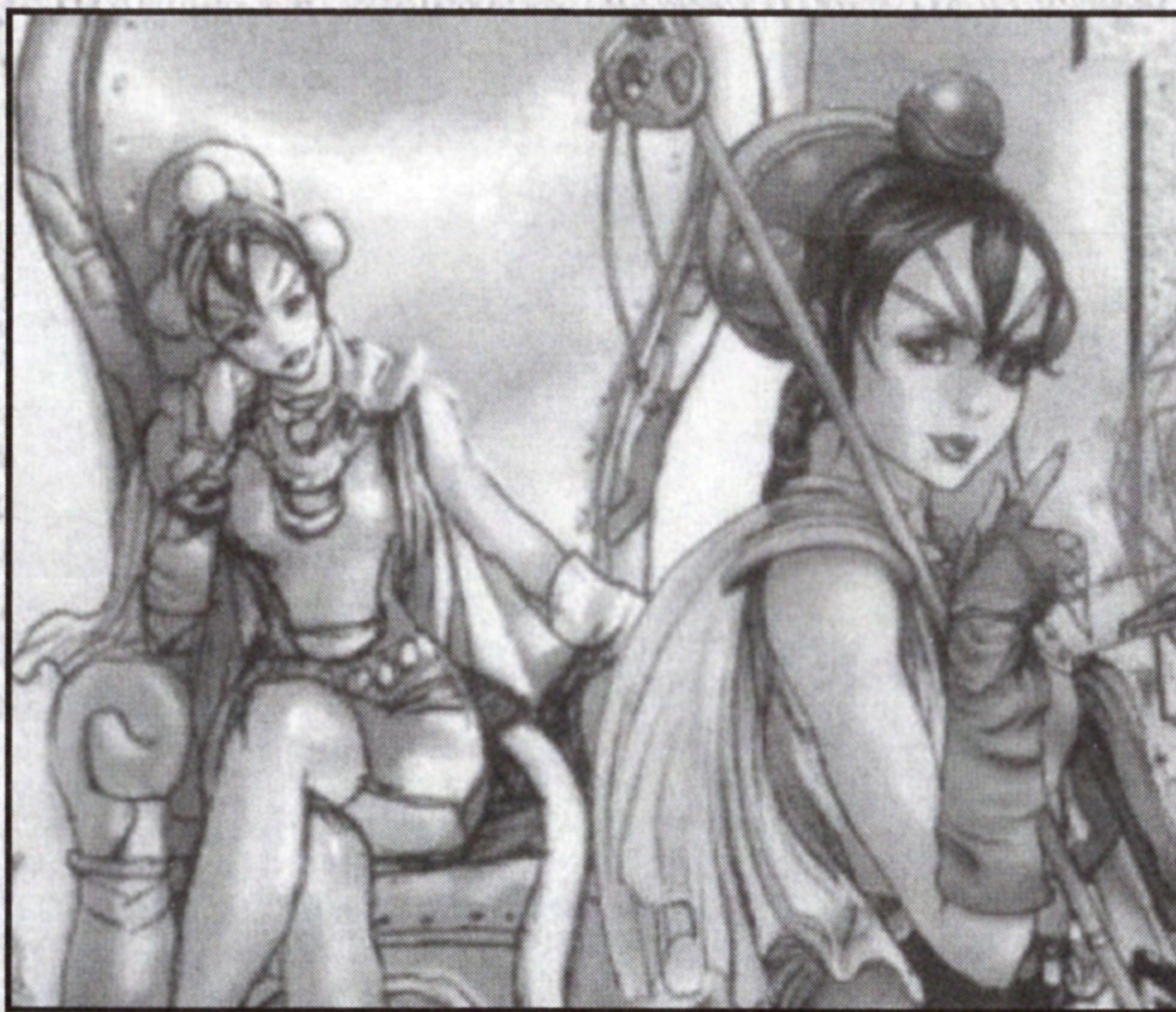
He is now a one man army.



Tyora the Great and Beautiful Wizard

Age 1016

Creator of the Spirit Stone. She's also gate keeper for the light palace Lanphos. She maintains the beauty of the palace that was built over 1000 years ago. She is out to retrieve the Spirit Stone from the evil King Eftar.



Kashan the Winged Warrior

Age 25

Resident of Nerafiti, son of the village leader. Has great wings on his back and is said to be the guardian of their Spirit Stone for centuries. However, Kashan's father was killed by Eftar when they came to take the Spirit Stone. Kashan is filled with rage for vengeance.



Characters (Enemies)

Eftar the Evil King

age 42

Ruler of the Northern province of Datilos. King Eftar's objective is to bring back the evil god Heladius. In order to do so, he needs the magical spells of the spirit stone. King Eftar is also a dark warrior and can use the big sword with great skill.



Kuromoa Wizard

Age 112

The black magician and the leader of the Datilos Army. A very loyal servant of King Eftar who uses many magic skills. He is very ambitious but does not trust others.



How to start the game: Main Menu

When you press the START button during the title screen it will take you to the main menu screen. Use the directional key and select with the ⊗ button.

Arcade - Arcade mode.

Original - Different from the Arcade mode, it has a story as well as game play.

Demo - Returns to the demo screen.



Arcade

Game Start - Select the difficulty level with the directional key. (If you choose level 4 or higher and clear the level, you must pass it twice.) If you press the ⊗ button the game will start.

Option - You can change different settings. Use up and down arrows to select different selections, and push left or right arrows to choose settings.

"Key Config" will give you another screen.

Life - You can select the starting HP amount.

Score - Top score.


Audio - Stereo / Mono.

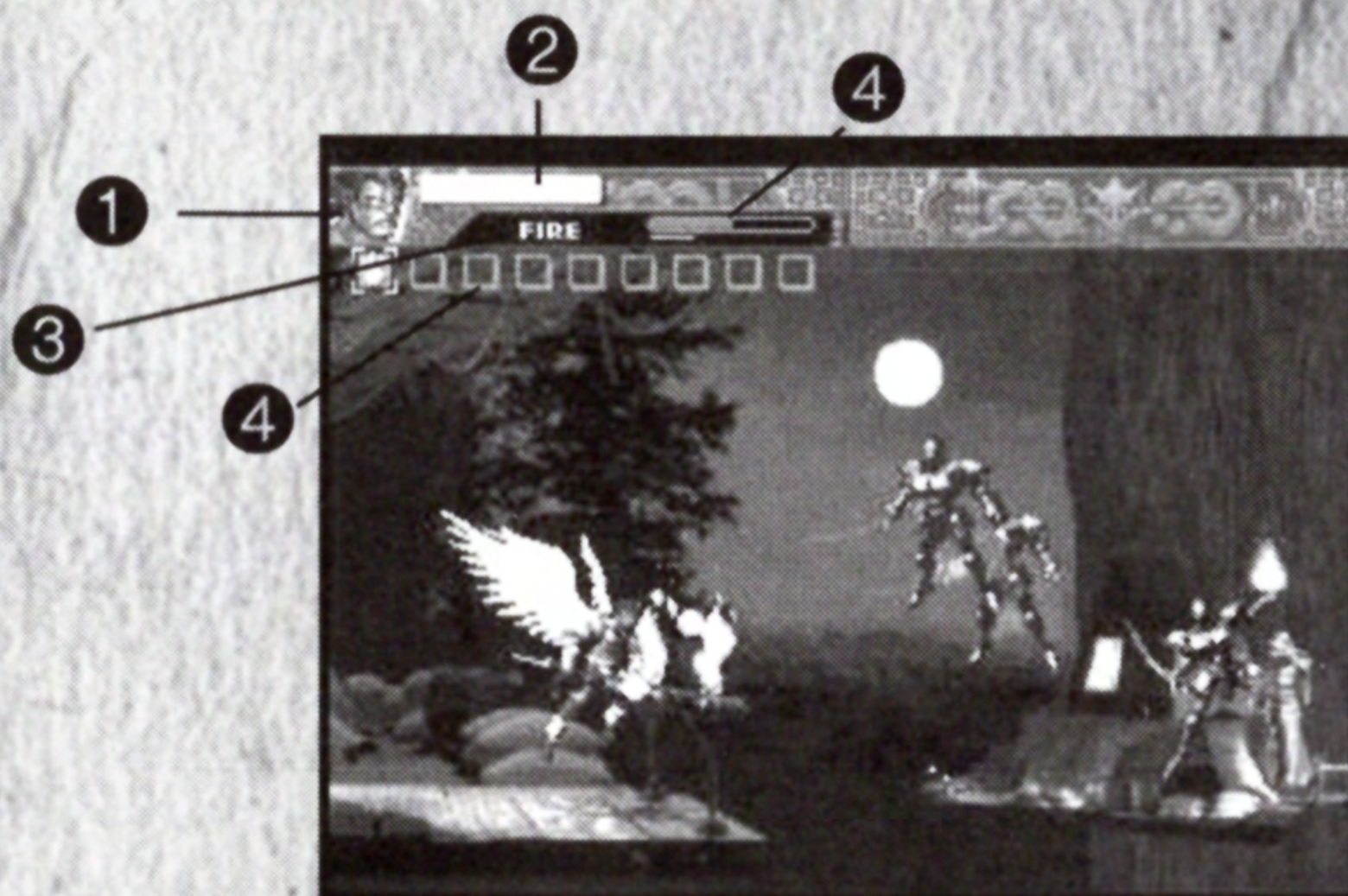
Key Config - Configure your buttons.

Exit - Exits the option screen.

Exit - Return to the Game Mode Menu.

Screen Description

- ① **Character Selected**
- ② **HP** - When you run out of HP, game is over.
- ③ **Magic Name**
- ④ **MP** - If you have enough MP for the magic that is selected, the magic can be used. The minimum MP amount needed for each magic is shown in a thin line.
- ⑤ **Magical Scroll** - You can use the selected magic by pressing the  button. Select different magic with the L1 button or R1 button.



Item Description

Power card - Shooting will power up.

Life Bottle (small) - Will recover some HP.

Life Bottle (big) - Will recover a lot of HP.

Magic Bottle - MP will increase.

Herb - Maximum HP amount will increase.

Magical Scroll - You will be able to do a lot of magic .

Magical Scroll Description



Fire - A Flame Thrower. Attack power is strong but has limited range.



Thunder - Lightning will strike. It will inflict some damage to everything on the screen.



Freeze - This will freeze all the enemies for a short time.



Slow - When it strikes an enemy he will be surrounded by a bubble and slow his movement.



Wind - It will stop enemies shooting attacks. Once used, you will lose this scroll.



Phoenix - The great Phoenix will appear, and shoot its magical feathers to attack. Once used, you will lose this scroll. Only Kashan can use this.



Sermon - Directs a monster to attack your enemies. "Lightning Wasp," "Gabucho," and "White Dragons" will randomly appear. Once used, you will lose your scroll. Only Tyora can use this.



Meteor - A Meteor shower will rain on the enemy. Once used, you will lose this scroll.



Heatbody - Makes you invincible for some time. Once used, you will lose this scroll.



Death - Major damage to your enemies. However, it has no effect on Statues and objects without any life force.



Nightmare - Your enemies will be frozen for an extended period.

Original Mode

Once you have passed the arcade mode, move on to the original mode! This is a different story line from the arcade mode. You have been selected to battle in the underground caves. As you move down and battle you will receive different items. Use these items and defeat the boss that is on the 17th floor. This level will not have a MP gauge. Instead, each Scroll has a certain limit on how many times the magic can be used. When your HP becomes 0 you will return to the palace, however, your attack strength and defense will be reduced to half and you will lose all your items.

New Game - Start the game from the beginning.

Key Config - You can change your button settings.

Audio - Stereo / Mono.

Exit - Takes you back to the Game Select mode.

Kings Palace Menu


Leave - Leave for battle.

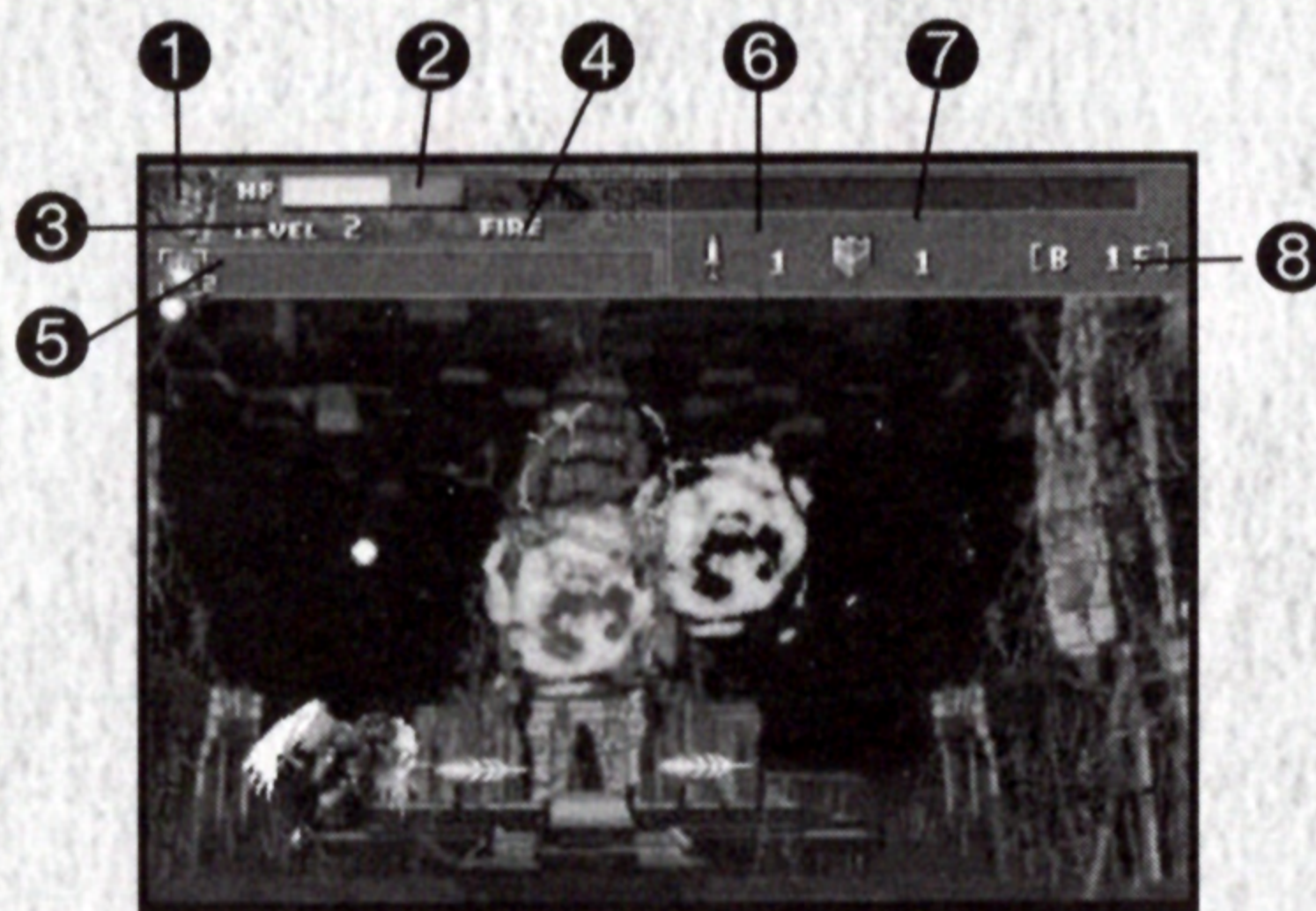
Receive Items - You can receive items from the King or give items.

System

Escape the original mode - Return to the main menu.

Screen Description

- ① **Selected Character**
- ② **HP** - If you lose all your HP, the game is over.
- ③ **Level**
- ④ **Name of magic chosen**
- ⑤ **Magical Scroll** - You can use the magic selected by pressing the  button. Use the L1 button or R1 button to select magic.
- ⑥ **Weapons strength**
- ⑦ **Defense**
- ⑧ **Your current floor**



START Button Menu during game play

Item

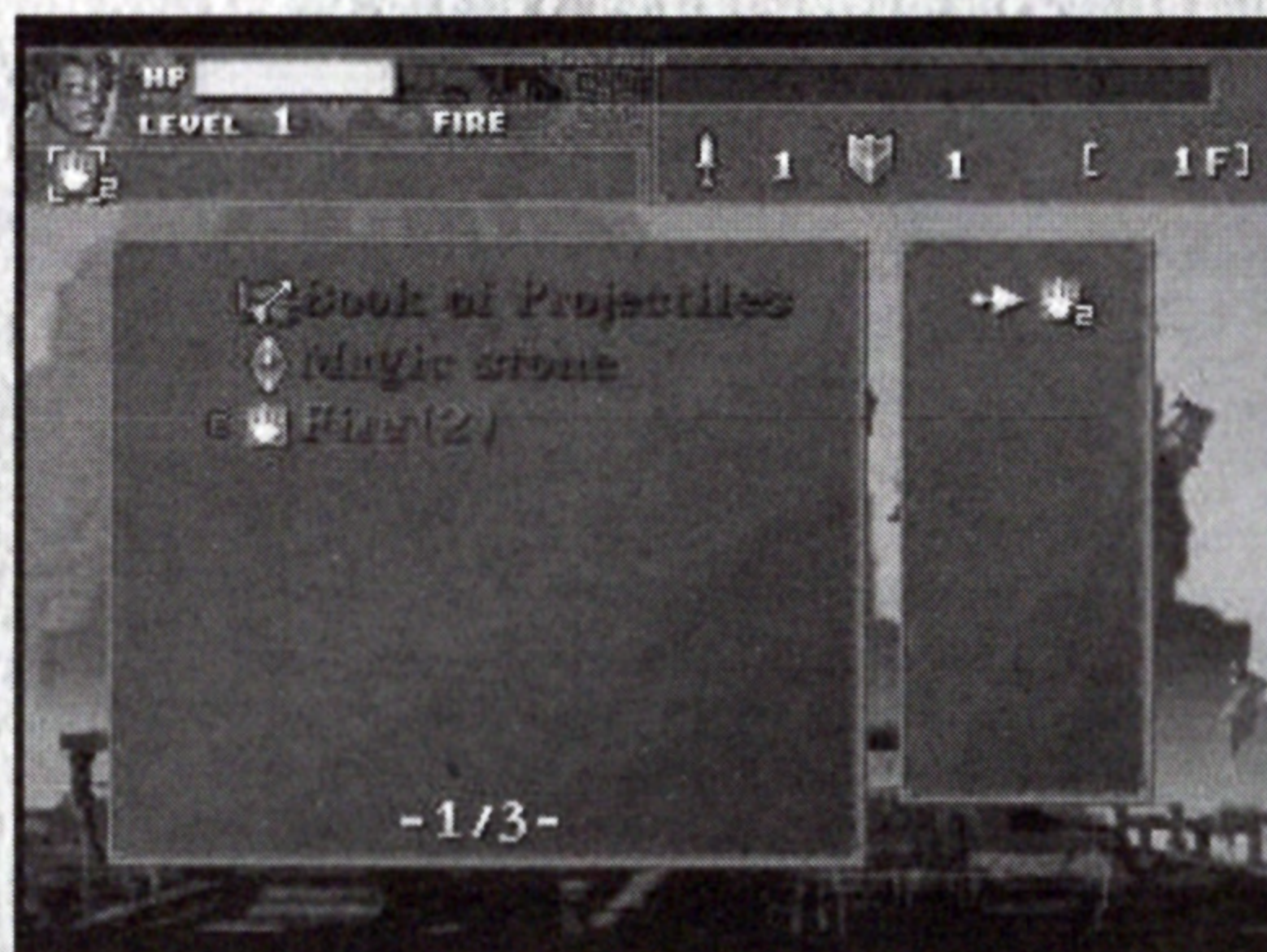
Use - Open treasure chests. Use items. Equip weapons.

Remove - Remove items.

Description - You can see the item description.

Magical Book

You can arrange the order of the magical scrolls. If you have more than 9 scrolls, you can switch between active and non active scrolls.



Status

Status - When you are not poisoned it will show "normal."

Level - Players level.

HP - Current HP / Maximum HP.

Weapons Strength - Depending on this, your Attack Power will differ.

Shot Strength - Shooting level (LV1, LV2, and MAX are the 3 stages).

Defense - Depending on this your damage from your enemies will differ.

Experience - As you defeat enemies, it will grow.

To your next level - This shows how many Experience points are needed to get to the next level.



Item Description



Life Water (Small) - HP will recover a little.



Life Water (Big) - HP will recover a lot.



Life Herb - Your greatest HP will gain slightly.



Leaf - It looks like a simple leaf but...



Medical Herb - Will heal you when you are poisoned.



Magical Stone - The stone will allow you to teleport to the Kings Castle.



Gold Treasure Chest - Can be opened with a gold key.



Silver Treasure Chest - Can be opened with a silver key.



Copper Treasure Chest - Can be opened with a bronze key.



Bronze Treasure Chest - Has Items in the chest.



Gold Key - Use to open Gold Treasure Chest.



Silver Key - Use to open Gold Treasure Chest.



Shooting Scroll - Your shooting level will increase.



Weapons Scroll - Weapons strength will increase by 1.



Shield Scroll - Your defense level will increase by 1.



Protection Ring - The ring will protect you from getting poisoned.



Protection Chain - The chain will protect your items from getting stolen.



Protection Bracelet - The Bracelet will increase your defense.

Description of Magic (Spells)



Fire - A Flame Thrower. Attack power is strong but short range.



Thunder - Lightning will strike. Attack power is weak.



Freeze - You will see frost and all your enemies on the screen will stop moving for a short time.



Slow - Your enemy will be surrounded by a bubble and it will slow them down.



Wind - A great wind will come and make all your enemies shooting attacks. ineffective.



Heat Body - Your body will burn red and become invincible.



Meteor - Meteors will fall and damage your enemies.



Death - Death will appear and damage your enemies.



Nightmare - Your enemies will be frozen for an extended period.



Phoenix - Phoenix will appear and shoot magical feathers.



Sermon - A great monster is summoned to attack the enemy.

WARRANTY

LIMITED WARRANTY - XS Games warrants to the original purchaser of this software product, for a period of ninety (90) days from the date of original purchase (the "Warranty period"), that under normal use, this medium on which this computer program is recorded is free from defects in materials and workmanship. This software program is sold "as is" without express or implied warranty of any kind and XS Games is not liable for any losses or damages of any kind resulting from use of this program. This warranty is not applicable to normal wear and tear. This warranty shall not be applicable and shall be void if the defect in this software product has arisen through abuse, unreasonable use, mistreatment or neglect.

WARRANTY CLAIMS - To make a warranty claim under this limited warranty, please return the product to the point of purchase accompanied by proof of purchase, your name, your return address, and a statement of the defect, or send the disk(s) within 90 days of purchase to: XS Games, 8800 Global Way, West Chester, OH 45069. Include a copy of the dated purchase receipt, your name, your return address, and a statement of the defect. XS GAMES or its authorized dealer will, at our option, repair or replace the product and return it to you (postage prepaid) or issue to you a credit equal to the purchase price.

To replace defective media after the 90-day warranty period has expired, send the original disk(s) to XS Games at the above address with a check or money order for \$15.00.

The foregoing states the purchaser's sole and exclusive remedy for any breach of warranty with respect to the software product.

LIMITATIONS - This warranty is in lieu of all other warranties and no other representations or claims of any nature shall be binding on or obligate XS Games. Any implied warranties applicable to this software product, including warranties of merchantability and fitness for a particular purpose, are limited to the ninety (90) day period described above. In no event will XS Games be liable for any special, incidental, or consequential damages resulting from possession, use, or malfunction of this XS Games software product.

Some states do not allow limitations as to how long an implied warranty lasts and/or exclusions or limitations of incidental or consequential damages so the above limitations and/or exclusions may not apply to you. This warranty gives you specific rights, and you may also have other rights which vary from state to state.

NOTICE - XS Games reserves the right to make improvements in the product described in this manual at any time and without notice. This manual and the software described in this manual are copyrighted. All rights are reserved. No part of this manual or the described software may be copied, reproduced, translated, or reduced to any electronic medium or machine-readable form without the prior written consent of XS Games, 8800 Global Way, West Chester, OH 45069, ATT: GAME MANAGEMENT.



Look for this new game from XS Games!

XS Games LLC, 8800 Global Way, West Chester, OH 45069. Sorcerer's Maze™ is a trademark of XS Games LLC copyright 2002. All rights reserved.

Licensed by Sony Computer Entertainment America for use with the PlayStation game console. PlayStation and the PlayStation logos are registered trademarks of Sony Computer Entertainment Inc. The ratings icon is a trademark of the Interactive Digital Software Association. Manufactured and printed in the U.S.A. THIS SOFTWARE IS COMPATIBLE WITH PLAYSTATION GAME CONSOLES WITH THE NTSC U/C DESIGNATION. U.S. AND FOREIGN PATENTS PENDING.

